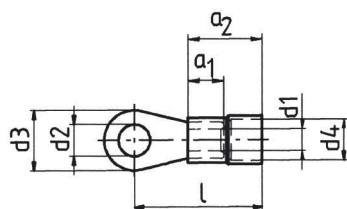
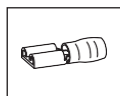


Papuci izolați tip auto



■ Papuci cupru izolați, tip ochi , 0.1 - 6 mm<sup>2</sup>

- Întărit in zona de sertizare
- Pentru conductoare multifilare fine si extrafine

Caracteristici

- Produs conf. normei DIN 46237
- Izolate, fără halogenuri
- Temperatura de lucru: pana la 105° C

Material

- Cu-ETP
- Izolație sintetica: poliamida / PVC (varianta cu X in cod)

Suprafața

- Stanata

Secțiune mm <sup>2</sup>	Cod	Culoare	Cote conf. DIN	Dimensiune mm								Greutate/ 100 buc ~ kg	buc/pac
				d1	d2	d3	d4	l	a1	a2	s		
0.1-0.4	6192	■	--	1.0	2.3	5.0	2.2	14.0	--	--	0.5	0.020	100
	61925	■	--	1.0	2.6	5.0	2.2	14.0	--	--	0.5	0.020	100
	6193	■	--	1.0	3.3	5.0	2.2	14.0	--	--	0.5	0.020	100
	61935	■	--	1.0	3.8	6.5	2.2	16.0	--	--	0.5	0.025	100
	6194	■	--	1.0	4.4	7.0	2.2	16.0	--	--	0.5	0.025	100
	6195	■	--	1.0	5.4	8.0	2.2	15.0	--	--	0.5	0.025	100
0.5-1	62025	■	2.5-1	1.6	2.8	6.0	3.2	16.5	5	10.5	0.8	0.060	100
	6203	■	3.0-1	1.6	3.2	6.0	3.2	16.5	5	10.5	0.8	0.060	100
	62035	■	3.5-1	1.6	3.7	6.0	3.2	16.5	5	10.5	0.8	0.550	100
	6204	■	4.0-1	1.6	4.3	8.0	3.2	17.5	5	10.5	0.8	0.070	100
	6205	■	5.0-1	1.6	5.3	10.0	3.2	18.5	5	10.5	0.8	0.090	100
	6206	■	--	1.6	6.5	11.0	3.2	20.5	5	10.5	0.8	0.080	100
	6208	■	--	1.6	8.4	14.0	3.2	22.5	5	10.5	0.8	0.130	100
	62010	■	--	1.6	10.5	18.0	3.2	24.5	5	10.5	0.8	0.130	100
1.5-2.5	6303	■	3.0-2.5	2.3	3.2	6.0	3.9	17.5	5	11.5	0.8	0.065	100
	63035	■	3.5-2.5	2.3	3.7	6.0	3.9	17.5	5	11.5	0.8	0.065	100
	6304	■	4.0-2.5	2.3	4.3	8.0	3.9	18.5	5	11.5	0.8	0.080	100
	6305	■	5.0-2.5	2.3	5.3	10.0	3.9	20.5	5	11.5	0.8	0.090	100
	6306	■	6.0-2.5	2.3	6.5	11.0	3.9	22.5	5	11.5	0.8	0.110	100
	6308	■	8.0-2.5	2.3	8.4	14.0	3.9	23.5	5	11.5	0.8	0.130	100
	63010	■	--	2.3	10.5	18.0	3.9	25.5	5	11.5	0.8	0.160	100
	4-6	6504	■	4.0-6	3.6	4.3	8.0	5.6	20.5	6	12.5	1.0	0.140
6505		■	5.0-6	3.6	5.3	10.0	5.6	21.5	6	12.5	1.0	0.160	100
6506		■	6.0-6	3.6	6.5	11.0	5.6	22.5	6	12.5	1.0	0.170	100
6508		■	8.0-6	3.6	8.4	14.0	5.6	25.5	6	12.5	1.0	0.220	100
65010		■	10.0-6	3.6	10.5	18.0	5.6	27.5	6	12.5	1.0	0.290	100