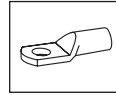


**■ Tubular cable lug for switch gear connections, copper 35 - 300 mm<sup>2</sup>**

Narrow palm version



- For connections in switch cabinets with reduced connecting space
- For stranded conductors e.g. VDE 0295 Class 2

**Characteristics**

- Annealed material optimises material and crimping characteristics

**Material**

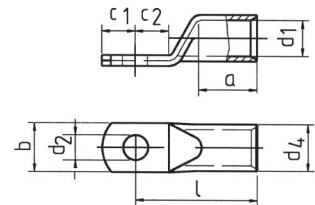
- Copper to EN 13600

**Surface**

- Tin plated

**Order info**

- Also available with inspection hole, part number with „ms“



Cross-section mm <sup>2</sup>	Size of bolt Ø	Part No.	Dimensions mm								Weight/ 100 pcs. ~ kg	pcs.
			d1	a	b	d2	d4	c1	c2	l		
35	M6	<b>5SG6</b>	8.5	17	15.0	6.5	12.0	7.5	7.5	32	1.78	25
50	M6	<b>6SG6</b>	10.0	19	15.0	6.5	14.0	10.0	10.0	37	2.95	25
	M8	<b>6SG8</b>	10.0	19	17.0	8.5	14.0	10.0	10.0	37	2.82	25
	M10	<b>6SG10</b>	10.0	19	19.0	10.5	14.0	11.5	12.0	39	3.08	25
70	M6	<b>7SG6</b>	12.0	21	17.0	6.5	16.5	10.0	10.0	43	4.22	25
	M8	<b>7SG8</b>	12.0	21	17.0	8.5	16.5	10.0	10.0	43	4.10	25
	M10	<b>7SG10</b>	12.0	21	19.0	10.5	16.5	11.5	12.0	44	4.45	25
	M12	<b>7SG12</b>	12.0	21	19.0	13.0	16.5	13.0	13.0	46	4.22	25
95	M6	<b>8SG6</b>	13.5	25	19.0	6.5	18.0	11.5	12.0	48	5.49	25
	M8	<b>8SG8</b>	13.5	25	19.0	8.5	18.0	11.5	12.0	48	5.46	25
	M10	<b>8SG10</b>	13.5	25	19.0	10.5	18.0	11.5	12.0	48	5.13	25
	M12	<b>8SG12</b>	13.5	25	19.0	13.0	18.0	13.0	13.0	49	5.15	25
120	M6	<b>9SG6</b>	15.0	26	19.0	6.5	19.5	11.5	14.0	51	6.16	10
	M8	<b>9SG8</b>	15.0	26	19.0	8.5	19.5	11.5	14.0	51	5.94	10
	M10	<b>9SG10</b>	15.0	26	19.0	10.5	19.5	11.5	14.0	51	5.81	10
	M12	<b>9SG12</b>	15.0	26	19.0	13.0	19.5	14.0	14.0	51	5.92	10
150	M6	<b>10SG6</b>	16.5	30	19.0	6.5	21.0	11.5	14.0	56	6.85	10
	M8	<b>10SG8</b>	16.5	30	19.0	8.5	21.0	11.5	14.0	56	6.80	10
	M10	<b>10SG10</b>	16.5	30	19.0	10.5	21.0	11.5	14.0	56	6.75	10
	M12	<b>10SG12</b>	16.5	30	19.0	13.0	21.0	15.0	15.0	57	7.15	10
185	M10	<b>11SG10</b>	19.0	30	24.5	10.5	24.0	11.5	18.0	65	10.59	10
	M12	<b>11SG12</b>	19.0	30	31.0	13.0	24.0	18.0	18.0	65	11.09	10
	M16	<b>11SG16</b>	19.0	30	31.0	17.0	24.0	18.0	18.0	65	9.76	10
240	M10	<b>12SG10</b>	21.0	35	31.0	10.5	26.0	11.5	19.0	72	12.70	5
	M12	<b>12SG12</b>	21.0	35	31.0	13.0	26.0	21.5	19.0	72	13.72	5
	M16	<b>12SG16</b>	21.0	35	31.0	17.0	26.0	21.5	19.0	72	13.28	5
300	M10	<b>13SG10</b>	23.5	44	31.0	10.5	30.0	11.5	24.0	87	19.70	5
	M12	<b>13SG12</b>	23.5	44	31.0	13.0	30.0	24.0	24.0	87	22.72	5
	M16	<b>13SG16</b>	23.5	44	31.0	17.0	30.0	24.0	24.0	87	22.50	5

► Tool: see chart page 44